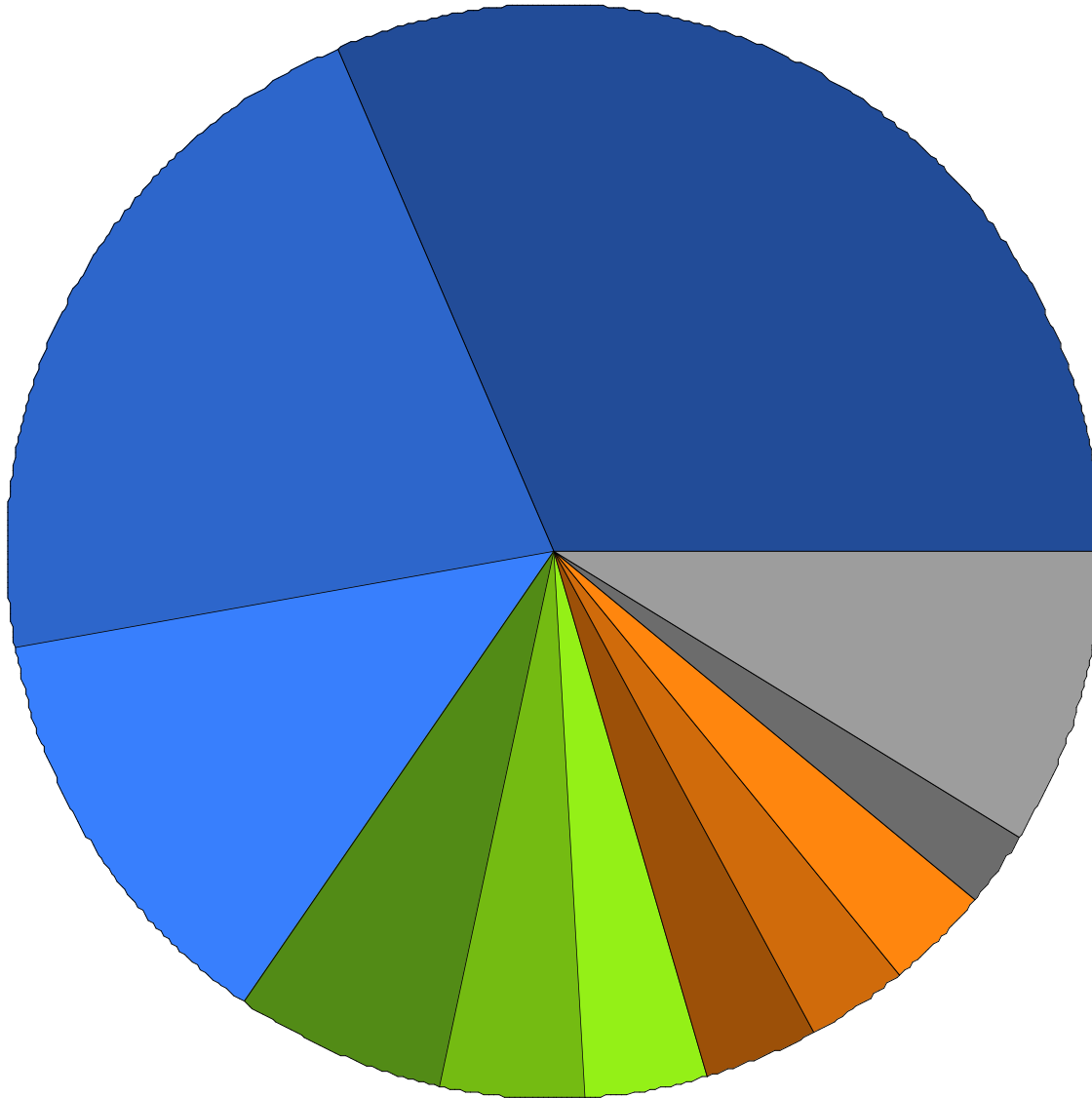


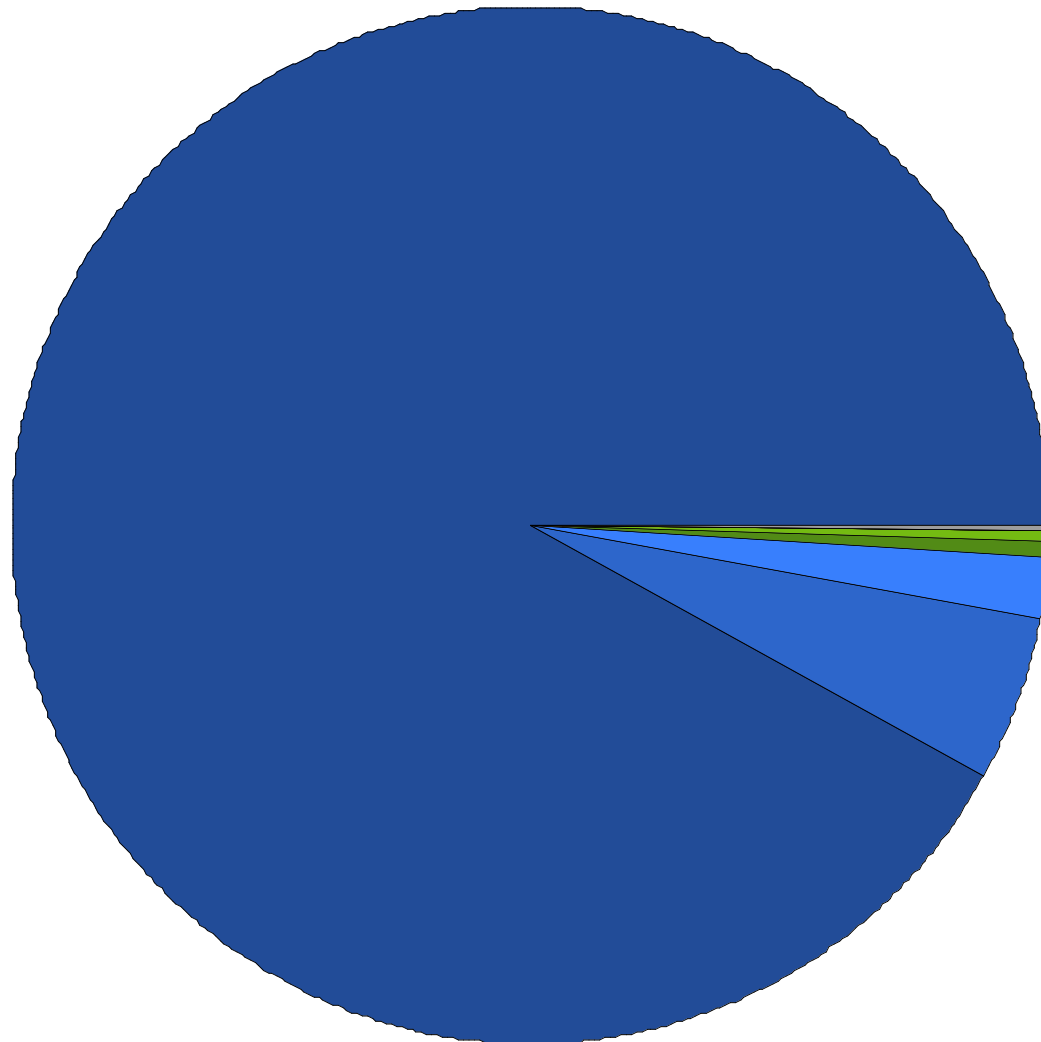
Expense Comparison by Category as a Percentage of Total Expenses



Printing	%31.51
Contributor	21.38
Administrative	12.58
Rent	6.18
Distribution	4.30
Commission	3.65
Utilities	3.38
Editor	3.01
Transportation	2.98
Auto	2.24
Other...	8.85
Total	\$518,295.65

1/1/13 - 1/12/17

Income Comparison as a Percentage of Total Income



Sponsorships	%91.99
Donation	5.15
Grants	1.97
Adjustment	0.52
Fundraiser	0.32
Resident Artist Income	0.04
Resident Artist Rent	0.03
Administrative Sales	0.02
Dividend	0.01
<hr/>	
Total	\$534,449.01

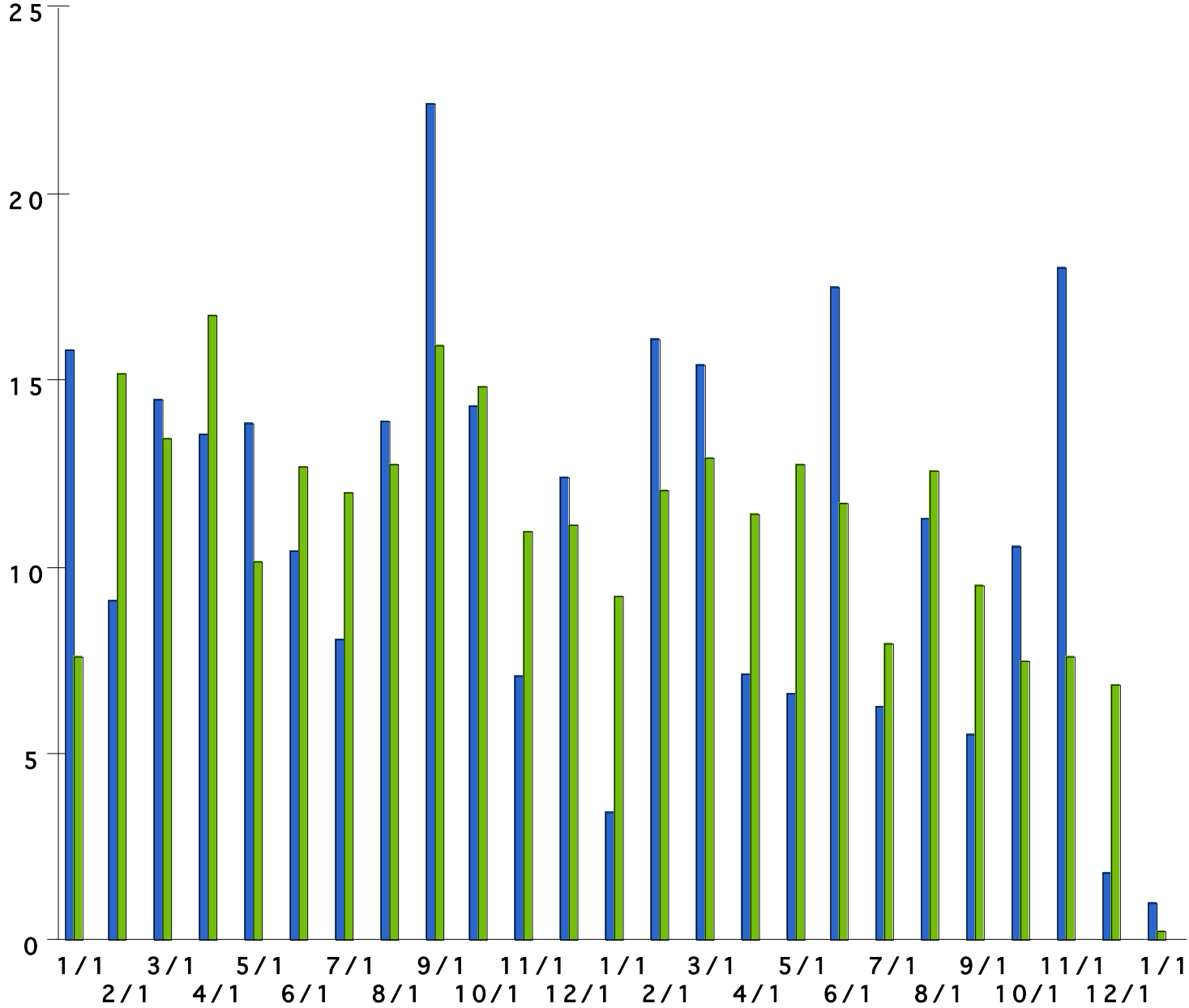
1/1/13 - 1/12/17

Monthly Income and Expenses

1/1/15 - 1/12/17

Income
Expenses

\$ in 1,000.00

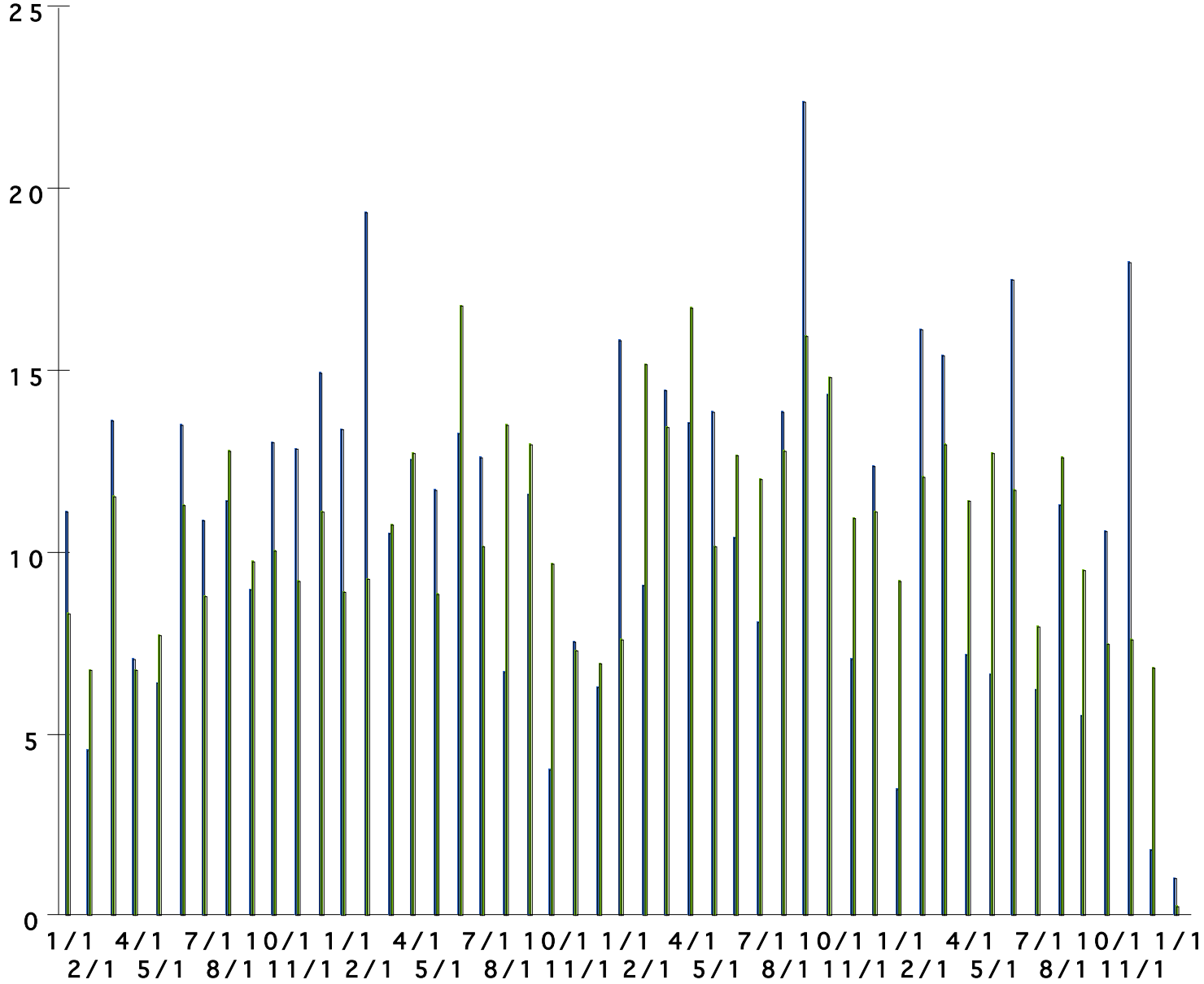


Monthly Income and Expenses

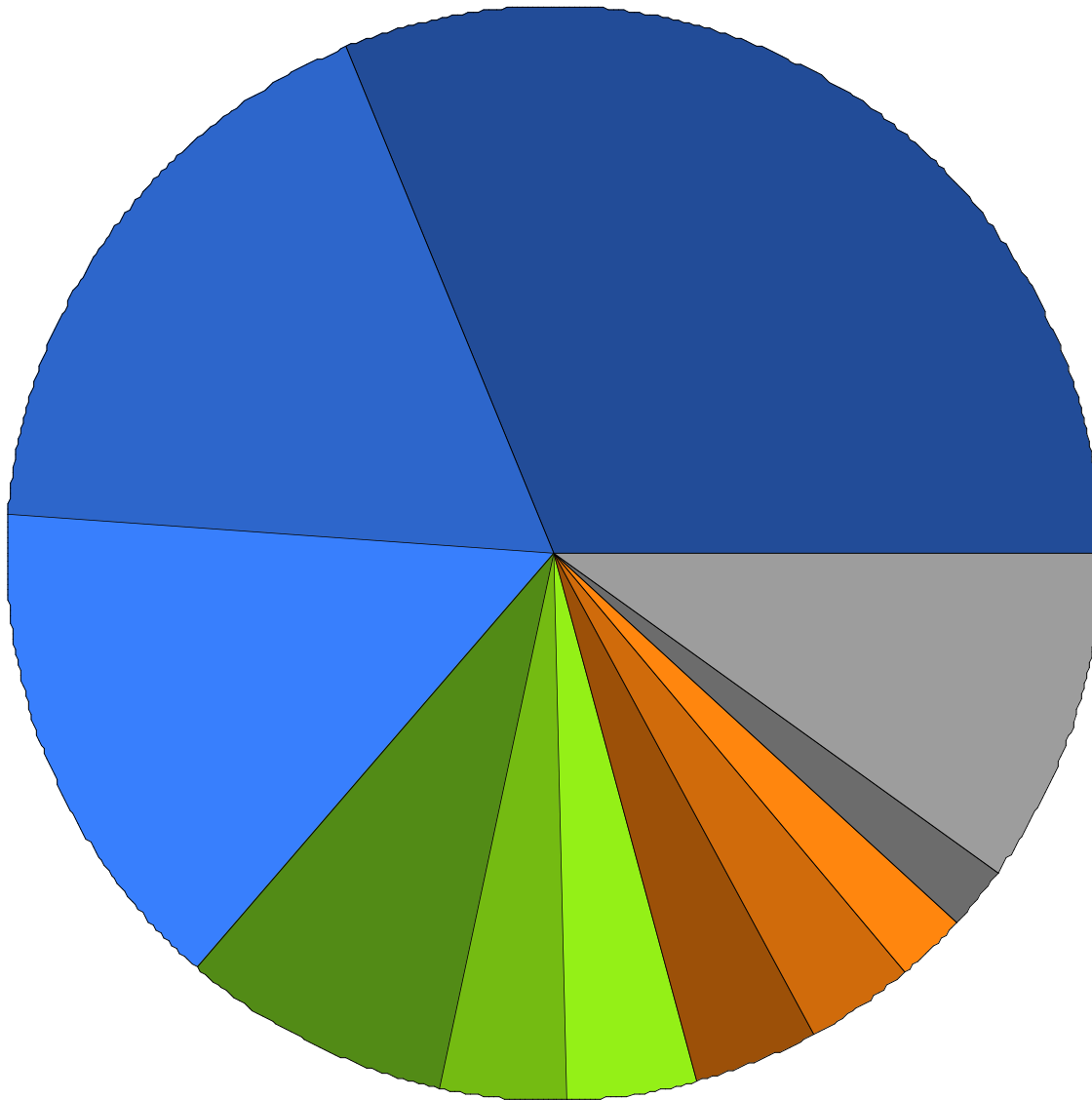
1/1/13 - 1/12/17

Income
Expenses

\$ in 1,000.00



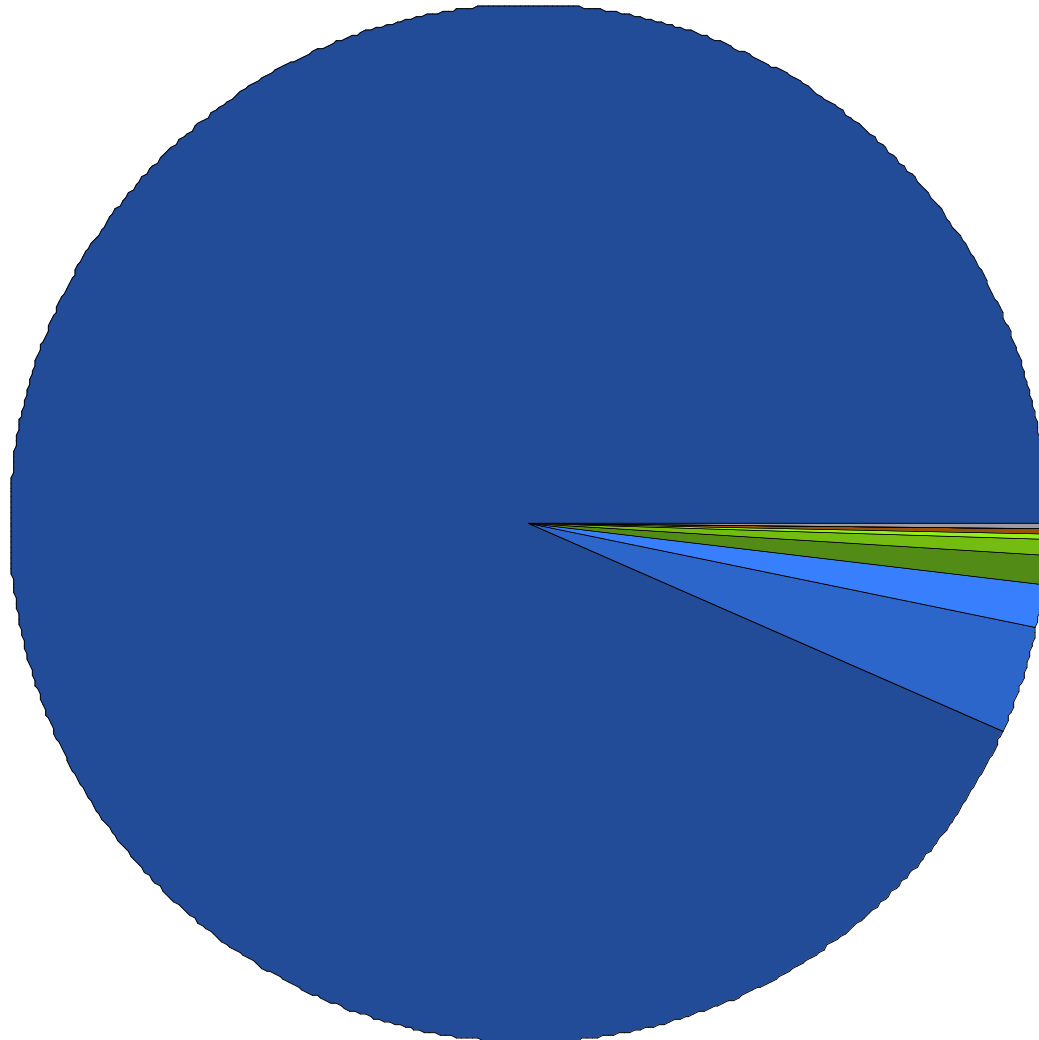
Expense Comparison by Category as a Percentage of Total Expenses



Printing	%31.21
Contributor	17.73
Administrative	14.78
Rent	7.94
Distribution	3.89
Utilities	3.86
Commission	3.67
Transportation	3.12
Auto	2.04
Supplies	1.85
Other...	9.96
Total	\$1,157,809.61

1/1/06 - 1/12/17

Income Comparison as a Percentage of Total Income



Sponsorships	%93.50
Donation	3.42
Grants	1.27
Projects	0.97
Art Sales	0.45
Fundraiser	0.19
Adjustment	0.17
Resident Artist Rent	0.05
Resident Artist Income	0.02
refund	0.02
Other...	0.01
Sub-Total	\$1,201,577.53

1/1/06 - 1/12/17